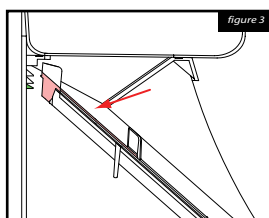
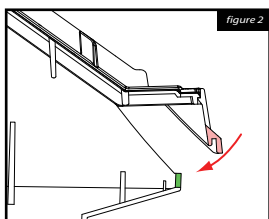
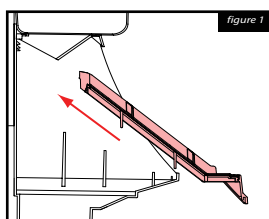


Installation

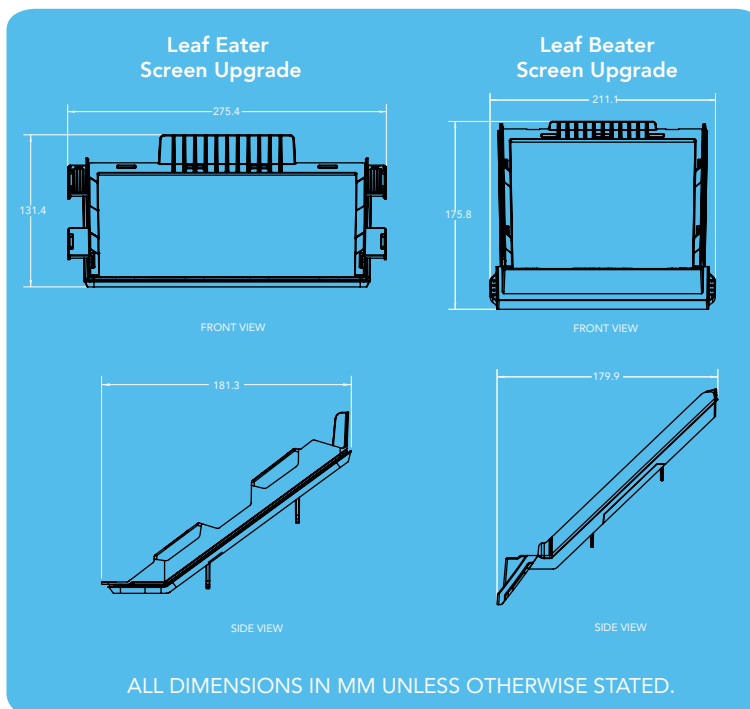
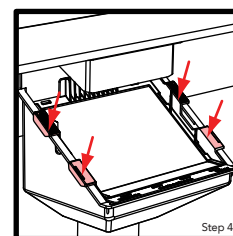
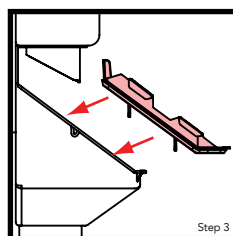
Leaf Beater® Original

1. Remove both the primary and secondary screen from your Leaf Beater Original® Rain Head. **Discard these as they are no longer required.**
2. Ensure that the Leaf Beater® Original Rain Head is free from leaves and debris.
3. Insert the new Leaf Beater® Original upgrade screen into the rain head at an angle (figure 1) until the front rubber channel (red) is nearly over the front lip (green) of the body.
Tip: Wetting the rubber seal will help the screen slide into place.
4. Fix the front of the Leaf Beater® Original screen into place (figure 2) by sliding the rubber channel (red) over the front lip (green) of the body.
5. Reaching towards the back of the Leaf Beater® Original upgrade screen push down on the plastic frame (figure 3) so that the rear edge (red) is below the lowest notch (green) and firmly against the back wall of the Leaf Beater® Original.



Leaf Eater® Original

1. Remove both the primary and secondary screen from your Leaf Eater® Original Rain Head. **Discard these as they are no longer required.**
2. Ensure that the Leaf Eater® Original Rain Head is free from leaves and debris.
3. Take the new Leaf Eater® Original upgrade screen and fit it into the front of the Leaf Eater® Original.
4. Push down on the front and rear quick release tabs of the Leaf Eater® Original Screen Upgrade to ensure a tight fit with the Leaf Eater® Original body.



Maintenance

The Leaf Eater® Original and Leaf Beater® Original screen upgrades requires minimal maintenance. If it does become necessary to clean, simply lift the release tabs, then hose or brush off.