



**Otto Graf GmbH  
Kunststoffzeugnisse**

Carl-Zeiss-Straße 2-6  
DE-79331 Teningen

Tel.: +49 7641 589-0  
Fax: +49 7641 589-50

www.graf.info  
mail@graf.info

**Project address:**

2500 Gallon System

United States

**Provided:**

RainHarvest Systems  
Tel: 770-889-2533  
E-Mail: Sales@RainHarvest.com

RainHarvest Systems  
4475 Alicia Lane  
Cumming, GA 30028

**Data:**

**Application**

Infiltration

**Loading**

40 t / HS-20

**Installation parameters**

Min. earth covering: 2' 8" (0,81 m)

Max. earth covering: 3' 5" (1,04 m)

**Product selection**

EcoBloc maxx

**Tank sizes**

Length: 10' 0" (3,05 m) (4 Pieces) Width:

10' 0" (3,05 m) (4 Pieces) Height: 3'

8" (1,11 m) (3 Pieces)

Layers: 3

**Tank volume**

Gross: 2,982.2 US gal. (11,29 m<sup>3</sup> / 399 ft<sup>3</sup>)

Net: 2,854.4 US gal. (10,81 m<sup>3</sup> / 382 ft<sup>3</sup>)

**Inspection and cleaning**

No inspection and cleaning

**Shafts**

Inlet shafts: 1

**Inlets**

Number: 2

Largest inlet: DN (nominal width) 110

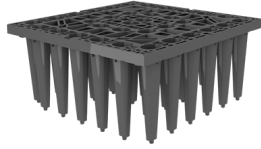
The EcoBloc Inspect flex crates are furnished with an inspection channel, which allows access by commercially available inspection vehicles as well as the possibility of high pressure jetting. The access is ideally created with the Vario 800 shaft system.



# EcoBloc Configurator

Overview of items: Blocks incl. baseplates and side plates

2500 Gallon System



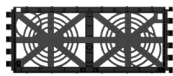
Pieces	Item no.	Description
45	402200	EcoBloc maxx

m



15	402201	EcoBloc maxx baseplate
----	--------	------------------------

mb



24	402203	EcoBloc maxx end plates (Set 2 units)
----	--------	---------------------------------------



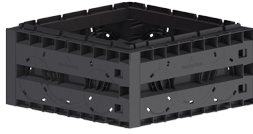
88		EcoBloc Connectors
1	402020	EcoBloc Connectors Set 50 pieces
1	402018	EcoBloc Connectors Set 25 pieces
2	402015	EcoBloc Connectors Set 10 pieces



# EcoBloc Configurator

Overview of items: Shafts and accessories

2500 Gallon System



Pieces	Item no.	Description
3	450050	Vario 800 flex type 1



1	450052	Vario 800 flex base/cover
---	--------	---------------------------



1	371015	Infiltration connecting piece DN 600
---	--------	--------------------------------------



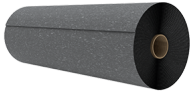
1	371021	Telescopic dome shaft 600 lorry Cover and compensating ring must be provided on site.
---	--------	--



# EcoBloc Configurator

Overview of items: General accessories

2500 Gallon System



Pieces	Item no.	Description
8	231002	GRAF-Tex geotextile = 39,00 m <sup>2</sup> (420 ft <sup>2</sup> )

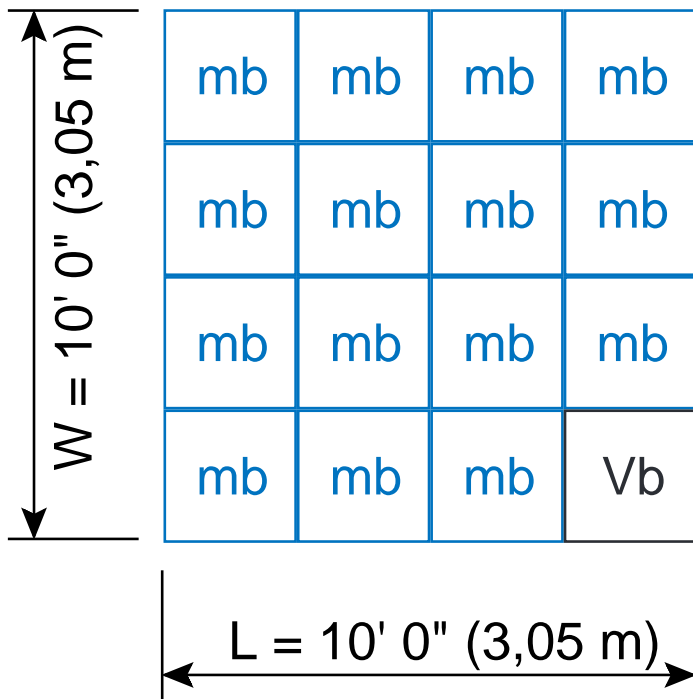
- m EcoBloc maxx
- V Vario 800 shaft
- mb maxx Baseplate
- Vb Vario 800 Baseplate



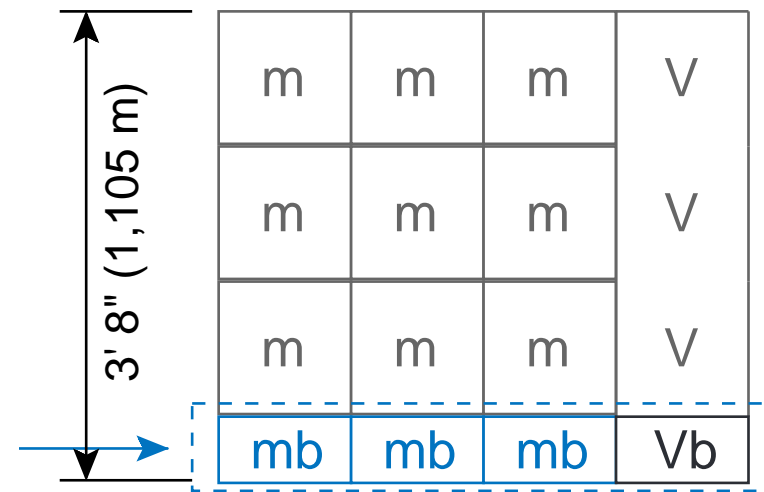
Base layer

15 x mb 1 x Vb

Top view



Front view



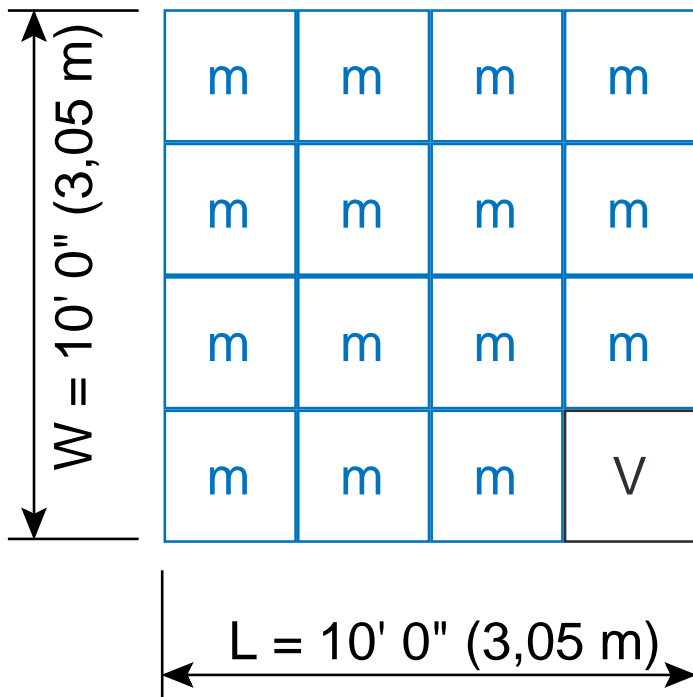
m	EcoBloc maxx	V	Vario 800 shaft
mb	maxx Baseplate	Vb	Vario 800 Baseplate



1. Layer to 3. Layer

15 x 1 x

Top view



Front view

