



EcoBloc Configurator

03/2019

Otto Graf GmbH
Kunststofferzeugnisse
Carl-Zeiss-Straße 2-6
DE-79331 Teningen

Tel.: +49 7641 589-0
Fax: +49 7641 589-50

www.graf.info
mail@graf.info

Project address:

40,000 Gallon System

HS-20 Vehicle Loading
United States

Provided:

Russell Jackson
6075 Parkway North Drive
GA 30040 Cumming
United States

Tel.: +1 770-889-2533
Fax:
E-Mail: russ@rainharvest.com

Data:

Application

Infiltration

Loading

40 t / HS-20

Installation parameters

Min. earth covering: 2' 8" (0,81 m)

Max. earth covering: 4' 0" (1,22 m)

Product selection

EcoBloc maxx

Tank sizes

Length: 26' 0" (7,93 m) (10 Pieces)

Width: 26' 0" (7,93 m) (10 Pieces)

Height: 8' 3" (2,53 m) (7 Pieces)

Layers: 7

Tank volume

Gross: 42,810.9 US gal. (162,06 m³ / 5,723 ft³)

Net: 41,143.2 US gal. (155,74 m³ / 5,500 ft³)

Inspection and cleaning

No inspection and cleaning

Shafts

Inlet shafts: 8

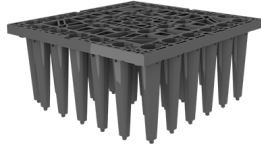
The EcoBloc Inspect flex crates are furnished with an inspection channel, which allows access by commercially available inspection vehicles as well as the possibility of high pressure jetting. The access is ideally created with the Vario 800 shaft system.



EcoBloc Configurator

Overview of items: Blocks incl. baseplates and side plates

40,000 Gallon System



Pieces	Item no.	Description
--------	----------	-------------

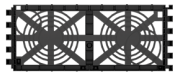
644	402200	EcoBloc maxx
-----	--------	--------------

m



92	402201	EcoBloc maxx baseplate
----	--------	------------------------

mb



140	402203	EcoBloc maxx end plates (Set 2 units)
-----	--------	---------------------------------------



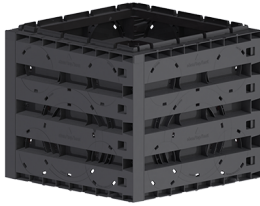
1312		EcoBloc Connectors
6	402025	EcoBloc Connectors Set 200 pieces
2	402020	EcoBloc Connectors Set 50 pieces
2	402015	EcoBloc Connectors Set 10 pieces



EcoBloc Configurator

Overview of items: Shafts and accessories

40,000 Gallon System



Pieces	Item no.	Description
32	450051	Vario 800 flex type 2



8	450052	Vario 800 flex base/cover
---	--------	---------------------------



8	371015	Infiltration connecting piece DN 600
---	--------	--------------------------------------



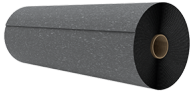
8	371021	Telescopic dome shaft 600 lorry Cover and compensating ring must be provided on site.
---	--------	--



EcoBloc Configurator

Overview of items: General accessories

40,000 Gallon System



Pieces	Item no.	Description
51	231002	GRAF-Tex geotextile = 255,00 m ² (2,745 ft ²)

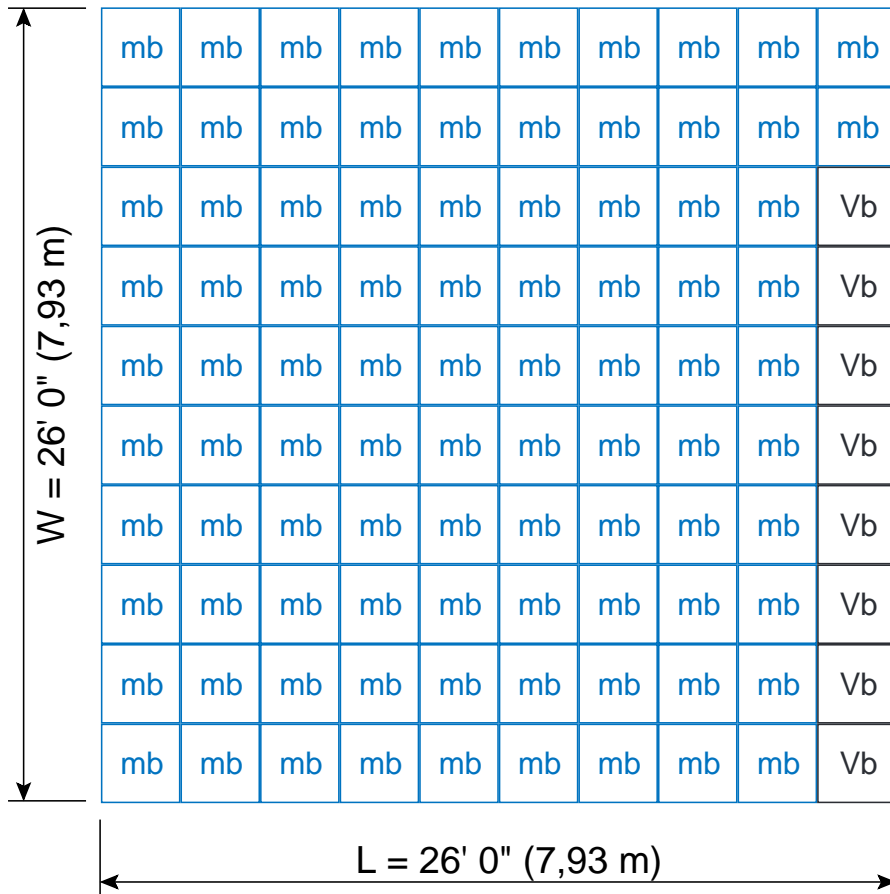
- m EcoBloc maxx
- V Vario 800 shaft
- mb maxx Baseplate
- Vb Vario 800 Baseplate



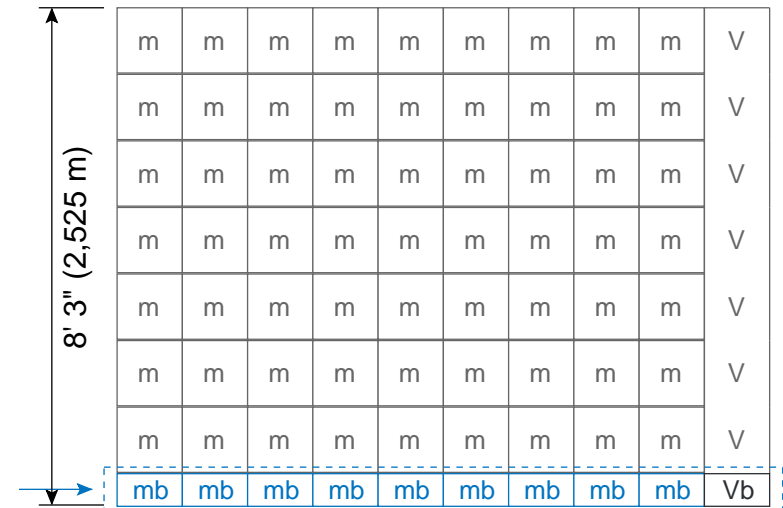
Base layer

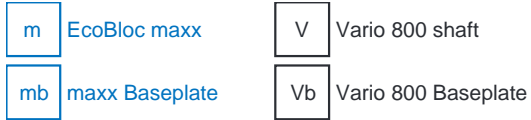
92 x mb 8 x Vb

Top view



Front view

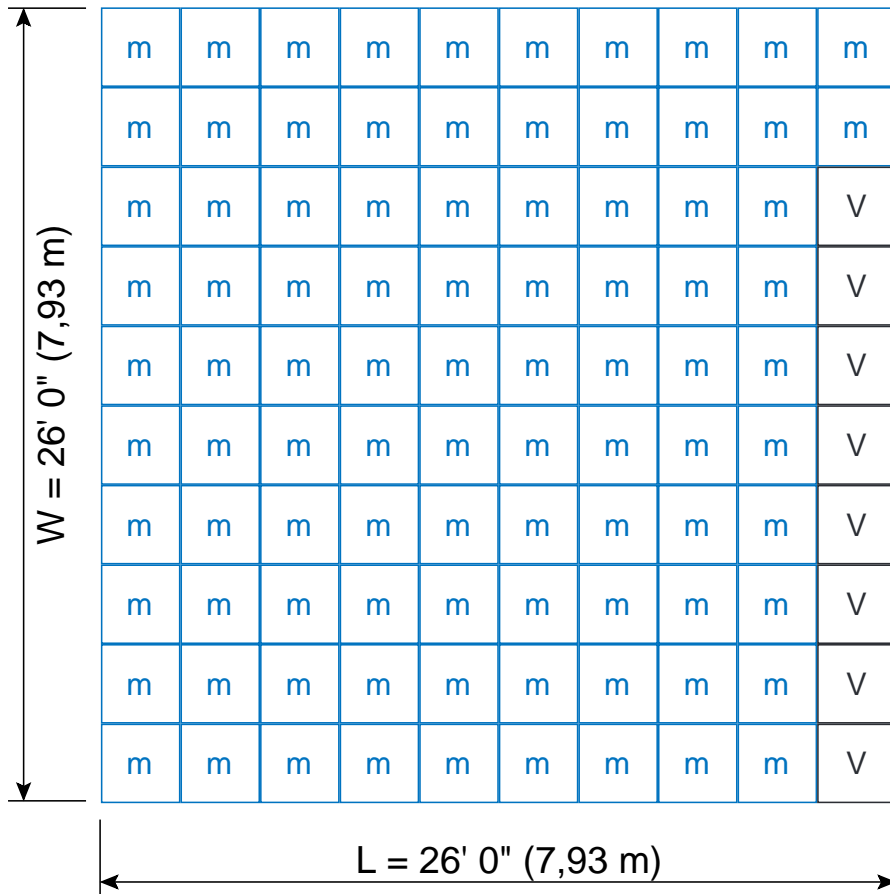




1. Layer to 7. Layer



Top view



Front view

