



# EcoBloc Configurator

03/2019

**Otto Graf GmbH**  
**Kunststofferzeugnisse**  
Carl-Zeiss-Straße 2-6  
DE-79331 Teningen

Tel.: +49 7641 589-0  
Fax: +49 7641 589-50

www.graf.info  
mail@graf.info

**Project address:**

10,000 Gallon System

HS-20 Vehicle Loading  
United States

**Provided:**

Russell Jackson  
6075 Parkway North Drive  
GA 30040 Cumming  
United States

Tel.: +1 770-889-2533  
Fax:  
E-Mail: russ@rainharvest.com

**Data:**

**Application**

Infiltration

**Loading**

40 t / HS-20

**Installation parameters**

Min. earth covering: 2' 8" (0,81 m)

Max. earth covering: 4' 0" (1,22 m)

**Product selection**

EcoBloc maxx

**Tank sizes**

Length: 16' 0" (4,88 m) (6 Pieces)

Width: 16' 0" (4,88 m) (6 Pieces)

Height: 5' 11" (1,82 m) (5 Pieces)

Layers: 5

**Tank volume**

Gross: 11,035.5 US gal. (41,77 m<sup>3</sup> / 1,475 ft<sup>3</sup>)

Net: 10,582.5 US gal. (40,06 m<sup>3</sup> / 1,415 ft<sup>3</sup>)

**Inspection and cleaning**

No inspection and cleaning

**Shafts**

Inlet shafts: 2

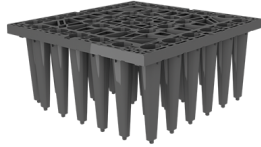
The EcoBloc Inspect flex crates are furnished with an inspection channel, which allows access by commercially available inspection vehicles as well as the possibility of high pressure jetting. The access is ideally created with the Vario 800 shaft system.



# EcoBloc Configurator

Overview of items: Blocks incl. baseplates and side plates

10,000 Gallon System



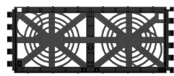
Pieces	Item no.	Description
170	402200	EcoBloc maxx

m



34	402201	EcoBloc maxx baseplate
----	--------	------------------------

mb



60	402203	EcoBloc maxx end plates (Set 2 units)
----	--------	---------------------------------------



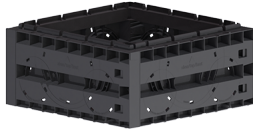
336		EcoBloc Connectors
1	402025	EcoBloc Connectors Set 200 pieces
2	402020	EcoBloc Connectors Set 50 pieces
1	402018	EcoBloc Connectors Set 25 pieces
2	402015	EcoBloc Connectors Set 10 pieces



# EcoBloc Configurator

Overview of items: Shafts and accessories

10,000 Gallon System



Pieces	Item no.	Description
10	450050	Vario 800 flex type 1



2	450052	Vario 800 flex base/cover
---	--------	---------------------------



2	371015	Infiltration connecting piece DN 600
---	--------	--------------------------------------



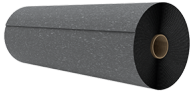
2	371021	Telescopic dome shaft 600 lorry Cover and compensating ring must be provided on site.
---	--------	--



# EcoBloc Configurator

Overview of items: General accessories

10,000 Gallon System



Pieces	Item no.	Description
20	231002	GRAF-Tex geotextile = 100,00 m <sup>2</sup> (1,076 ft <sup>2</sup> )

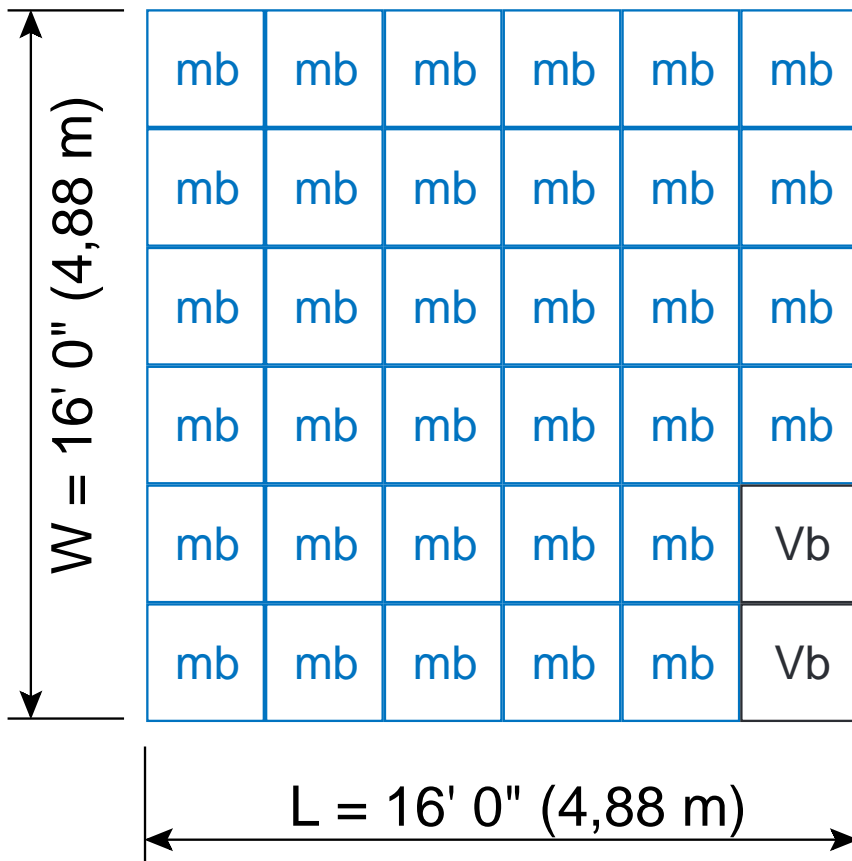
- m EcoBloc maxx
- V Vario 800 shaft
- mb maxx Baseplate
- Vb Vario 800 Baseplate



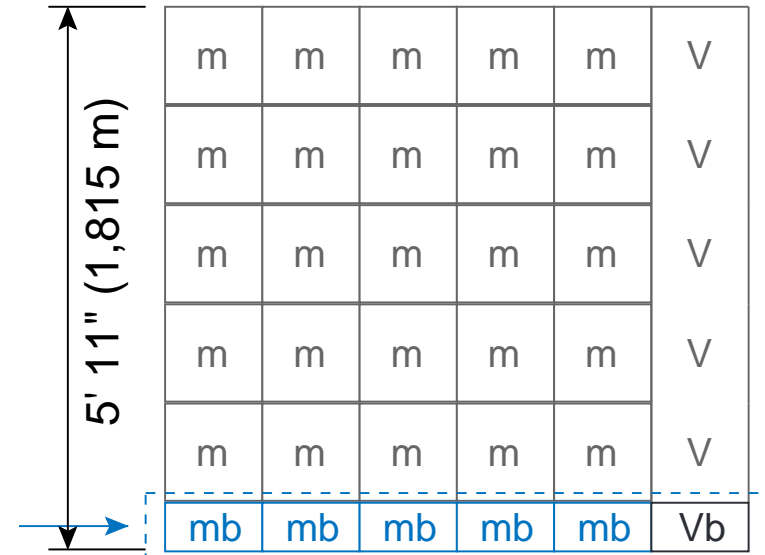
**Base layer**

34 x mb 2 x Vb

**Top view**



**Front view**



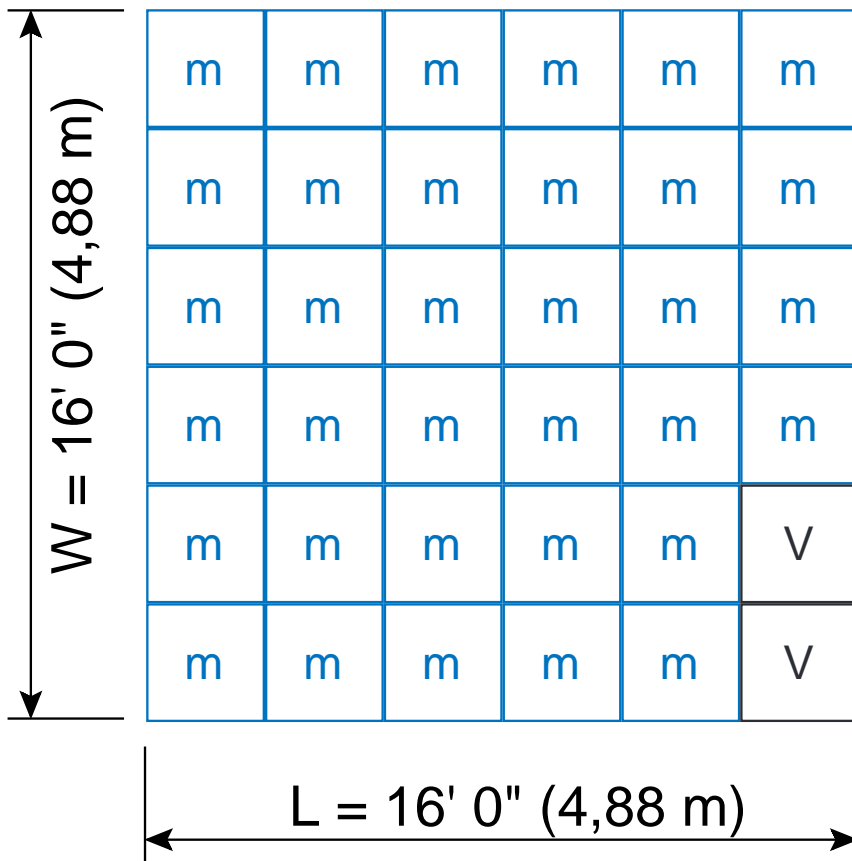
m	EcoBloc maxx	V	Vario 800 shaft
mb	maxx Baseplate	Vb	Vario 800 Baseplate



1. Layer to 5. Layer

34 x m 2 x V

Top view



Front view

