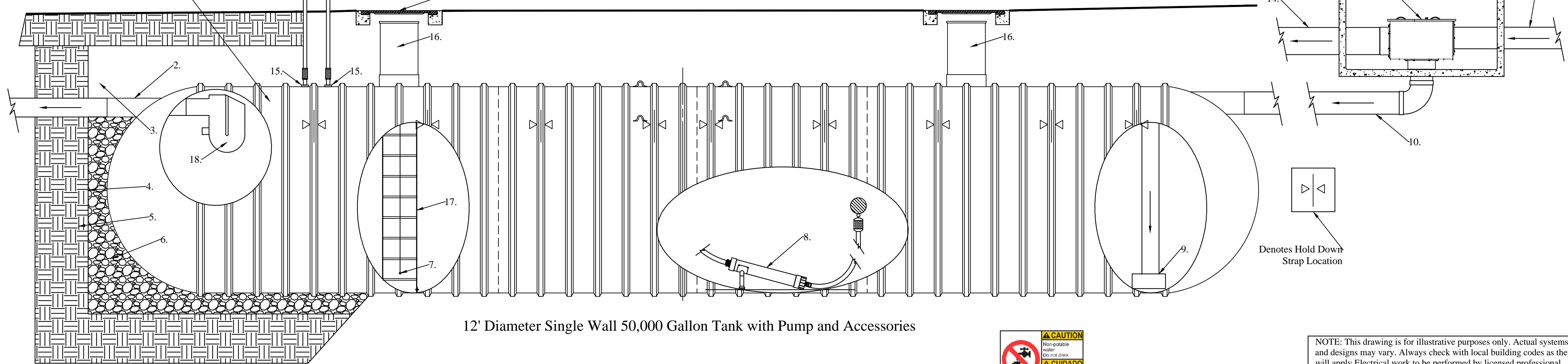
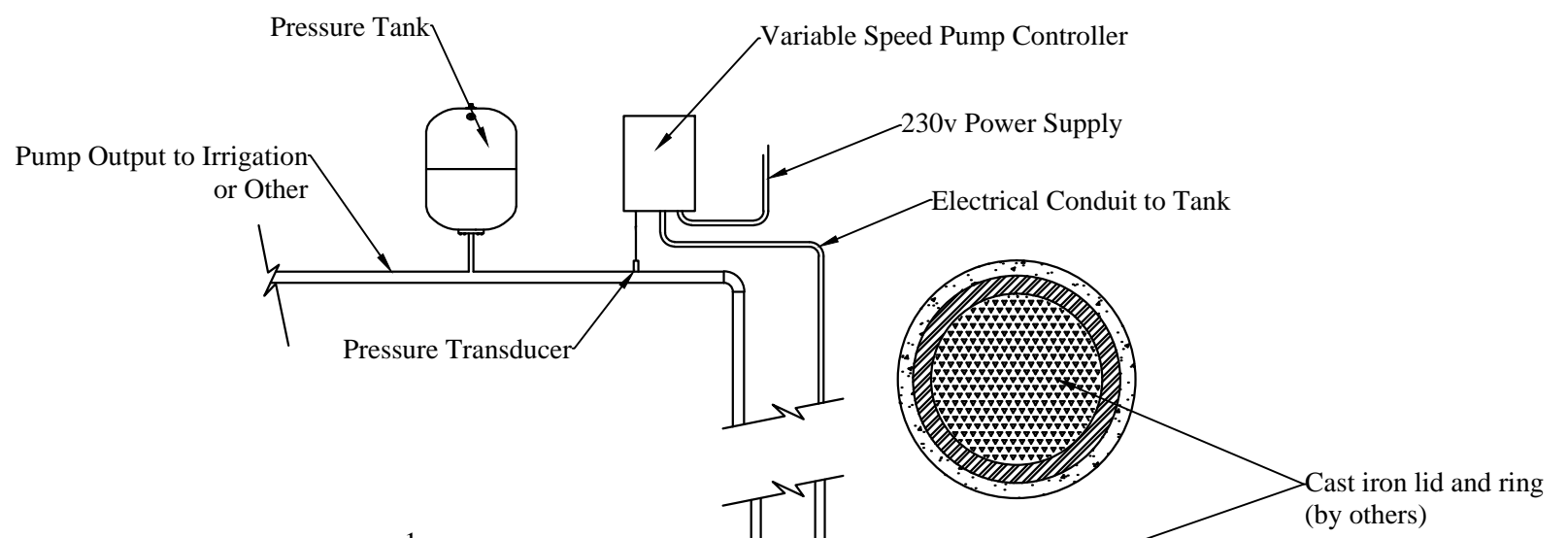


Legend A	
1.	12' Diameter Single Wall Fiberglass Tank Capacity 50,000 Gallons
2.	12" PVC Overflow with Flexible Connection
3.	Sand or approved equivalent backfilled Top Portion of Tank
4.	Geotech fabric between gravel and sand
5.	Compacted Soil
6.	Backfill 75% of Tank with Approved Gravel
7.	Tank Level Sensor
8.	RainHarvest Systems FI-6000 5 HP 59GPM @ 60 PSI, Variable Speed Pump and Housing with 2" Stainless Steel Floating Extractor
9.	Calming Inlet Device
10.	12" Clean Water Inlet From Filtration Vault
11.	Filtration Vault
12.	Drainage Input (3)
13.	Graf XXL Filtration (3)
14.	Overflow and Debris Flush Outlet (3) and Connection to Drainage Manifold
15.	2" Full Coupling (2)
16.	30" Manway location and height TBD
17.	Access Ladder
18.	Overflow Siphon Device

USER'S Responsibility
 Untreated Rainwater is NON-Potable water. Warning do not drink water supplied from RainHarvest Systems rainwater systems and related equipment. We will be happy to offer suggestions on the use of our various products either by way of printed material or through direct contact with RainHarvest Systems team members. However, since we have no control over the use of our products once they are shipped, NO WARRANTY WHETHER OF MERCHANTABILITY, FITNESS FOR PURPOSE, OR OTHERWISE is made beyond the repair, replacement, or refund of purchase price at the sole discretion of RainHarvest Systems. Users shall determine the suitability of the product for the intended application before using, and the users assume all risk and liability whatsoever in connection therewith, regardless of any team members suggestions or statements as to the application or construction. In no event shall any remedy exceed the purchase price of the product. Consult local building codes for the system use.



NOTE: This drawing is for illustrative purposes only. Actual systems and designs may vary. Always check with local building codes as they will apply. Electrical work to be performed by licensed professional. Points of use shall be labeled as: "Non Potable water, Do Not Drink!"

CHK BY:	APP BY:	DRAWN BY: CMG	QUOTE NO.:	SH# 1 OF 1
RainFlo 50,000 Gallon Collection System				
		RainHarvest Systems LLC. 6075 Parkway North Drive Suite D Cumming, GA 30040 Tel: 770-889-2533 Fax: 770-889-2577		