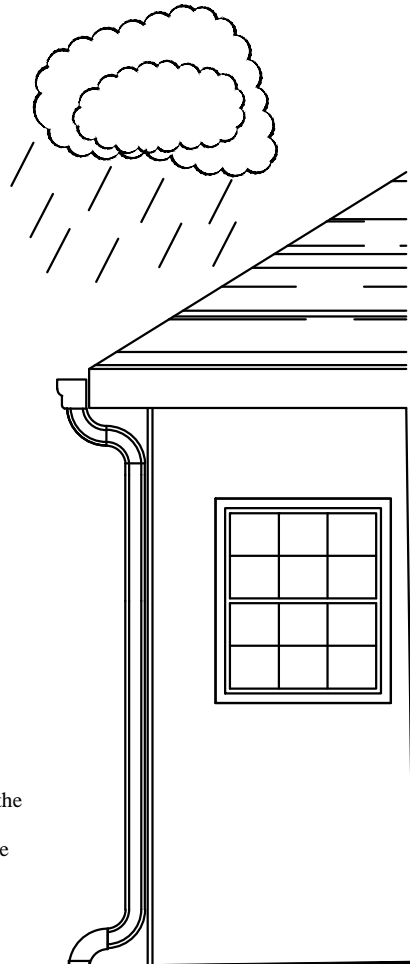
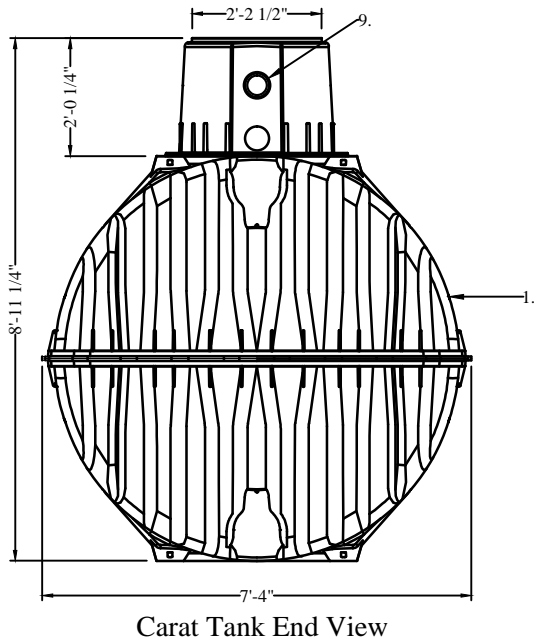
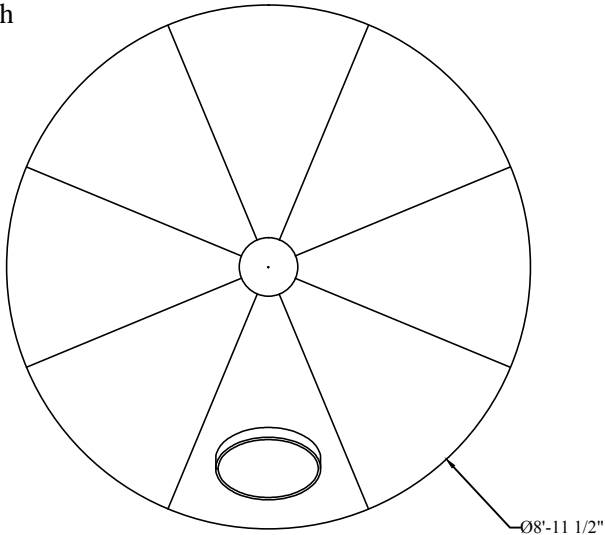
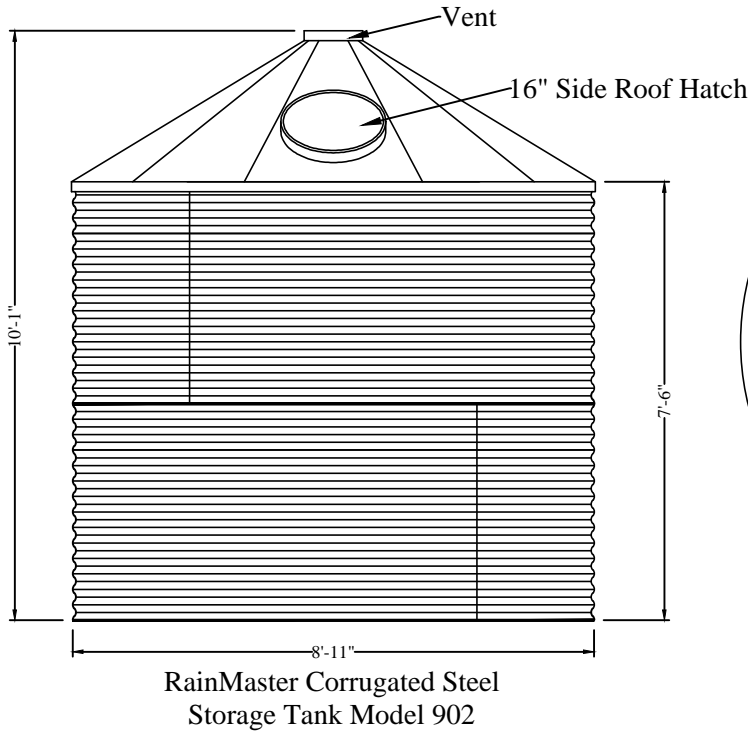


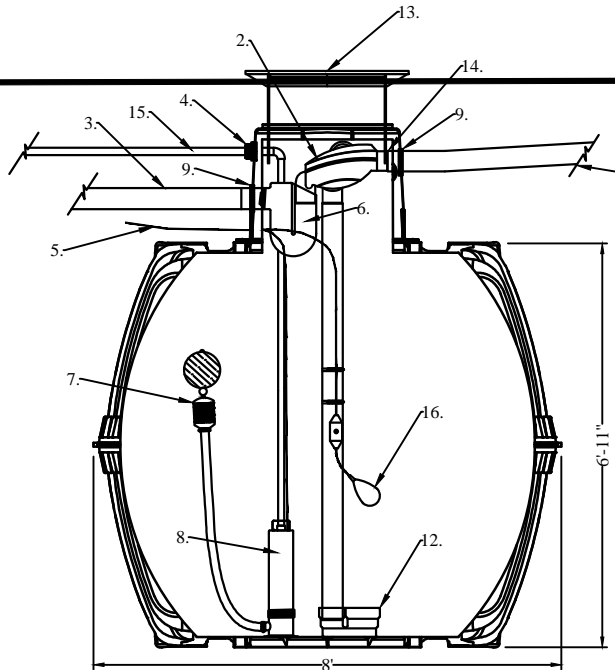
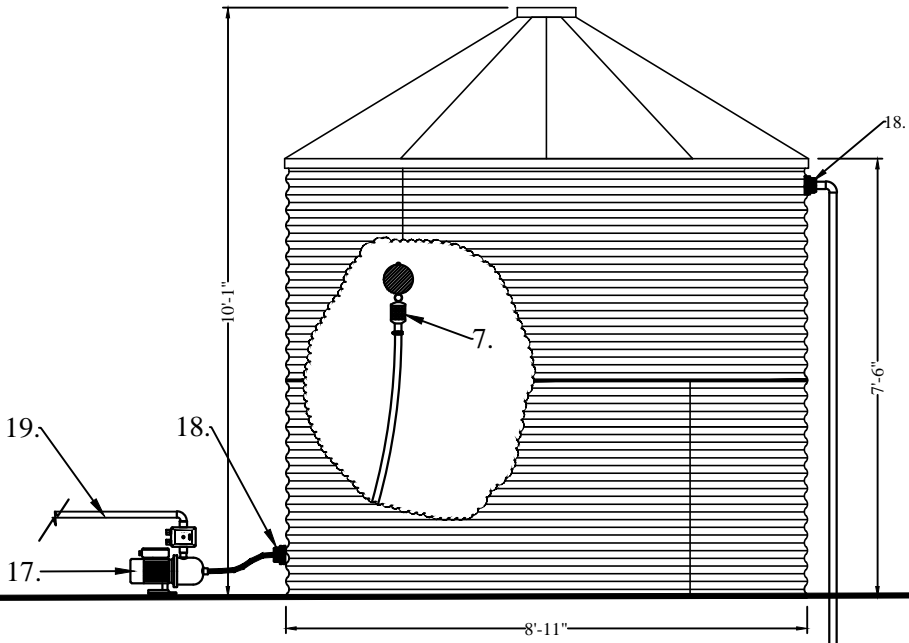
Legend	
1.	GRAF Carat S 1700 Gallon Underground Tank
2.	GRAF Optimax Pro Internal High efficiency, self-cleaning, In Tank filtration system.
3.	4" overflow drain to storm drain or other. Typically 4" PVC Sewer and Drain.
4.	1-1/4" Bulkhead Fitting for plumbing thru tank or riser assembly
5.	Electrical Connection to Pump and Float Switch
6.	Overflow siphon with mosquito and rodent stop
7.	GRAF Floating 1-1/4" Extractor with check valve
8.	RainFlo 1.25 HP 115v Submersible Pump
9.	4" RainFlo Pipe Gasket
10.	4" PVC from Roof Gutters and Downspouts
11.	1 1/4" Schedule 40 PVC Pump output to Use
12.	Calming inlet to prevent the disturbance of the fine sediment layer at bottom of tank
13.	Adjustable Riser and Childproof Lid with Sealing Gaskets
14.	Spanfix Coupler
15.	Pump Output Line to Above Ground Tank (1-1/4" Typical)
16.	Float Switch to Activate Pump When Water is Available to Fill Above Ground Tank
17.	RainFlo MHP75A 3/4 HP Centrifugal Pump with Automatic Operation
18.	2" Bulkhead Fitting
19.	Output to Irrigation or Other Non Potable



- GRAF Optimax High Efficiency, Self-cleaning, In Tank Filtration System.**
- \* Filter specially developed for rain water harvesting
  - \* Low maintenance; self cleaning
  - \* Only 6.5" height offset between inlet and outlet
  - \* 0.35mm (.01") mesh filter
  - \* Transparent cover for easy maintenance
  - \* Optional Opticlean® Sprayhead
  - \* Over 95% yield
  - \* Self-cleaning filter
  - \* Max. 3,750 sq. ft. with 4" connections
  - \* Space saving filter technology integrated in the tank

Tank height should be set and plumbing pitched to best utilize existing grade.

A site assessment should be done prior to installation to determine the optimum levels for filter and plumbing so as to provide positive drainage to tank and stormwater overflows.



**USER'S Responsibility**  
Untreated Rainwater is NON-Potable water. Warning do not drink water supplied from RainHarvest Systems rainwater systems and related equipment. We will be happy to offer suggestions on the use of our various products either by way of printed material or through direct contact with RainHarvest Systems team members. However, since we have no control over the use of our products once they are shipped, NO WARRANTY WHETHER OF MERCHANTABILITY, FITNESS FOR PURPOSE, OR OTHERWISE is made beyond the repair, replacement, or refund of purchase price at the sole discretion of RainHarvest Systems. Users shall determine the suitability of the product for the intended application before using, and the users assume all risk and liability whatsoever in connection therewith, regardless of any team members suggestions or statements as to the application or construction. In no event shall any remedy exceed the purchase price of the product. Consult local building codes for the system use.

NOTE: This drawing is for illustrative purposes only. Actual systems and designs may vary. Always check with local building codes as they will apply. Electrical work to be performed by licensed professional. Points of use shall be labeled as: "Non Potable water, Do Not Drink!"



NOTE: This drawing is for illustrative purposes only. Actual systems and designs may vary. Always check with local building codes as they will apply. Electrical work to be performed by licensed professional. Points of use shall be labeled as: "Non Potable water, Do Not Drink!"

CHK BY:	APP BY:	DRAWN BY: CMG	QUOTE NO.:	SH.# 1 OF 1
RainFlo Rainwater Collection System				
		RainHarvest Systems LLC. 6075 Parkway North Drive Suite D Cumming, GA 30040 Tel: 770-889-2533 Fax: 770-889-2577		