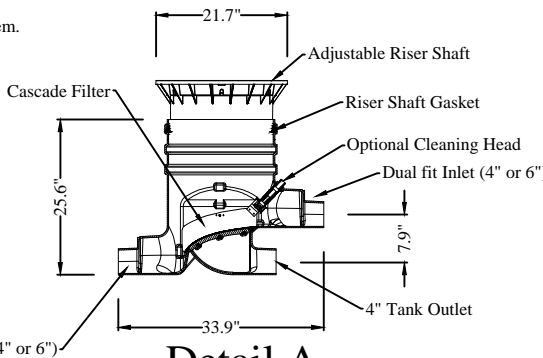


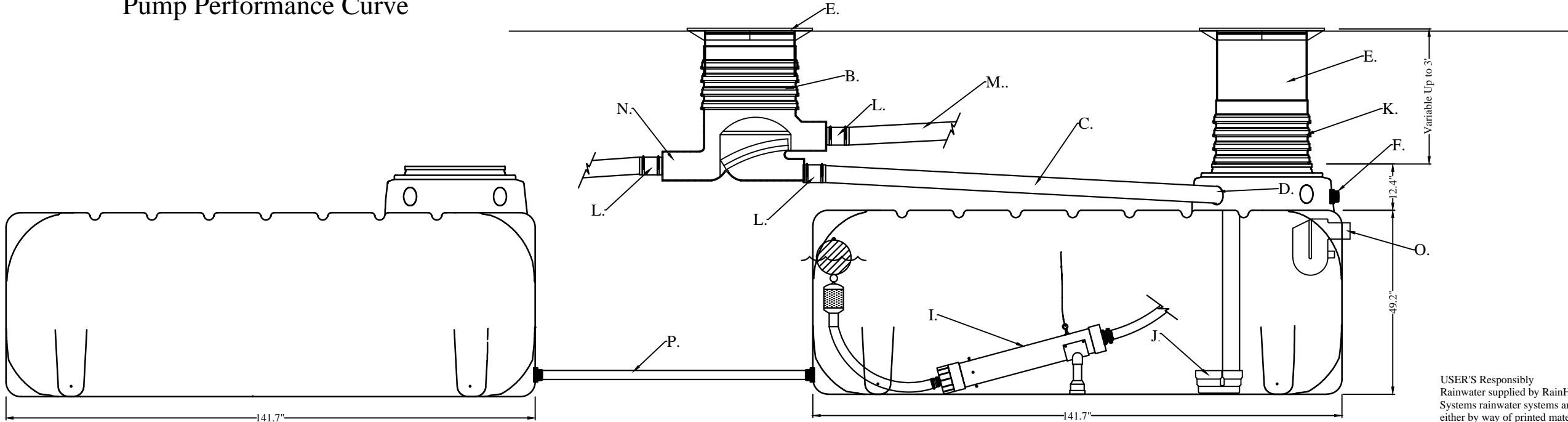
Pump Performance Curve

High efficiency, self-cleaning, below ground filtration system.

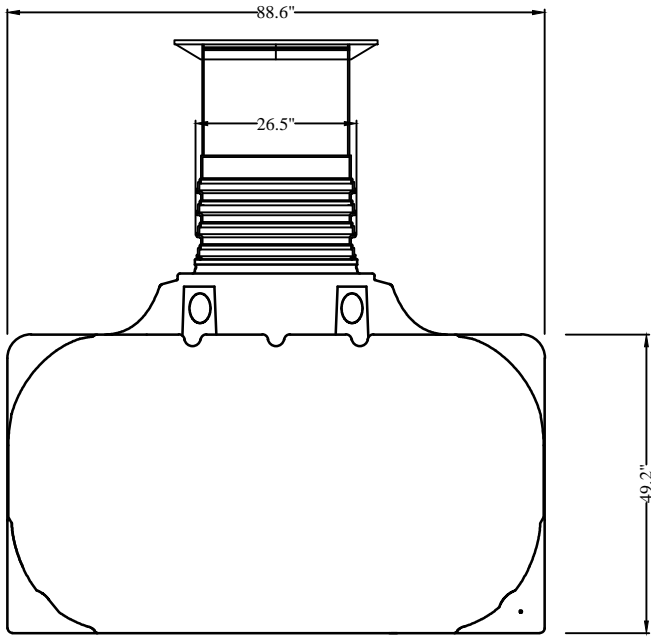
- * Variable installation depth from 22-44 inches
- * Flush installation at ground level
- * Only 7.87" height offset between inlet and outlet
- * 0.35mm (.01") mesh filter
- * Lockable childproof cover
- * Optional Opticlean® Sprayhead
- * Available with vehicle-loading cast iron lid
- * Over 95% yield
- * Self-cleaning filter
- * 4" and 6" connections
- * Max. 3,750 sq. ft. with 4" connections
- * Max. 7,500 sq. ft. with 6" connections



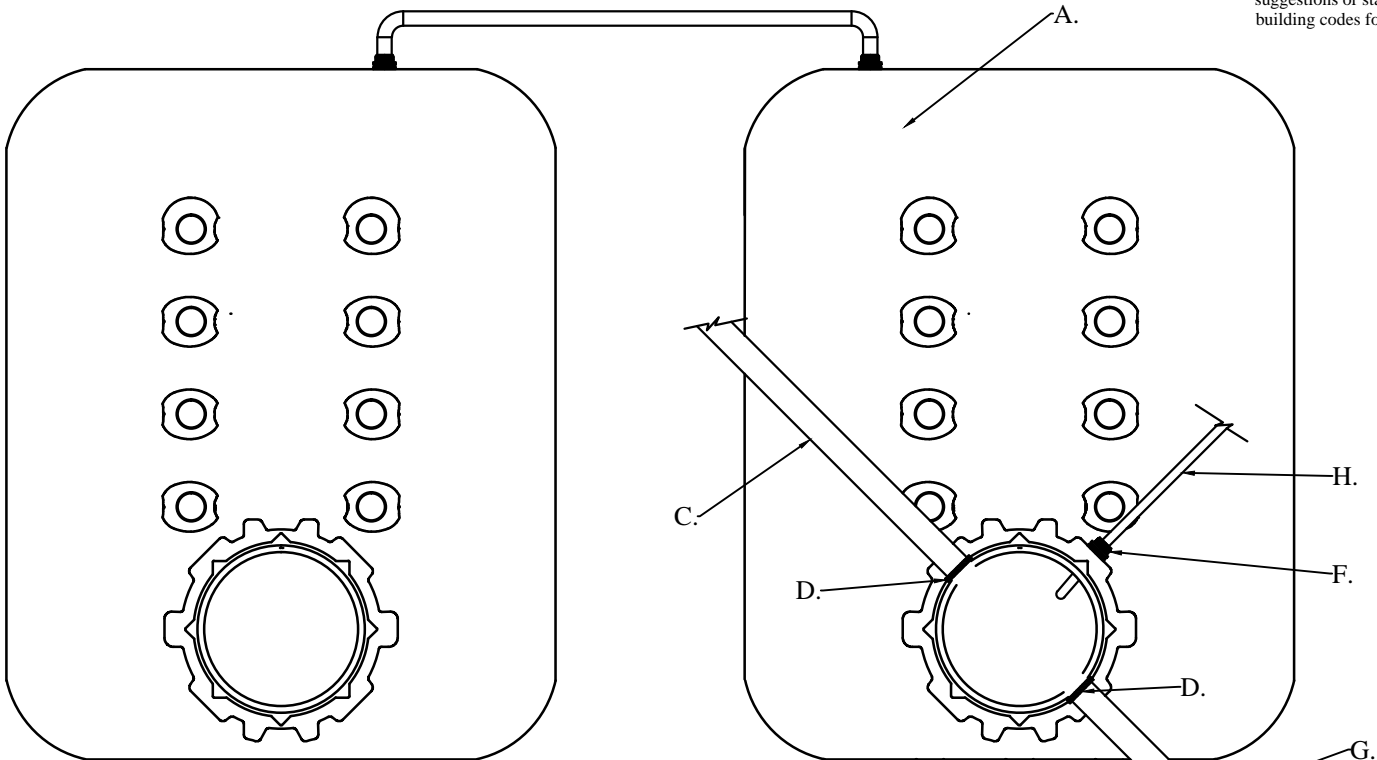
Detail A



Tank Side View



Tank End View



Tank Top View

Legend	
A.	GRAF Platin 2000 Gallon Underground Tank with Access Riser Shaft and Lid
B.	GRAF Optimax Filter, see Detail A
C.	4" PVC Clean Water Inlet From Optimax Filter
D.	4" Tank Gasket
E.	GRAF Telescoping Riser
F.	2" Banjo Bulkhead Fitting for Tank Penetrations
G.	4" PVC Tank Overflow
H.	2" PVC Pump Output Line
I.	RainFloFI3300 Pumping System, Variable Speed Pump Controller and 13 Gallon Pressure Tank Located Outside Tank
J.	4" Calming Inlet In Tank
K.	GRAF Riser Extension
L.	4" Fernco Type Coupler
M.	Inlet From Roof Drains
N.	Overflow to Storm Drain
O.	Overflow Siphon Mounted in Tank
P.	Tank Balance Line (2" PVC)

USER'S Responsibility
Rainwater supplied by RainHarvest Systems is NON-Potable water. Warning do not drink water supplied from RainHarvest Systems rainwater systems and related equipment. We will be happy to offer suggestions on the use of our various products either by way of printed material or through direct contact with RainHarvest Systems team members. However, since we have no control over the use of our products once they are shipped, NO WARRANTY WEATHER OF MERCHANTABILITY, FITNESS FOR PURPOSE, OR OTHERWISE is made beyond the repair, replacement, or refund of purchase price at the sole discretion of RainHarvest Systems. Users shall determine the suitability of the product for the intended application before using, and the users assume all risk and liability whatsoever in connection therewith, regardless of any team members suggestions or statements as to the application or construction. In no event of the purchase price of the product. Consult local building codes for the system use.

NOTE: This drawing is for illustrative purposes only. Actual systems and designs may vary. Always check with local building codes as they will apply. Electrical work to be performed by licensed professional. Points of use shall be labeled as: "Non Potable water, Do Not Drink!"

CHK BY:	APP BY:	DRAWN BY:	QUOTE NO.	SH.#
		CMG		1 OF 1
RainFlo 4000 Gallon Platin Rainwater Collection System				
		RainHarvest Systems LLC. 6075 Parkway North Drive Suite D Cumming, GA 30040 Tel: 770-889-2533 Fax: 770-889-2577		