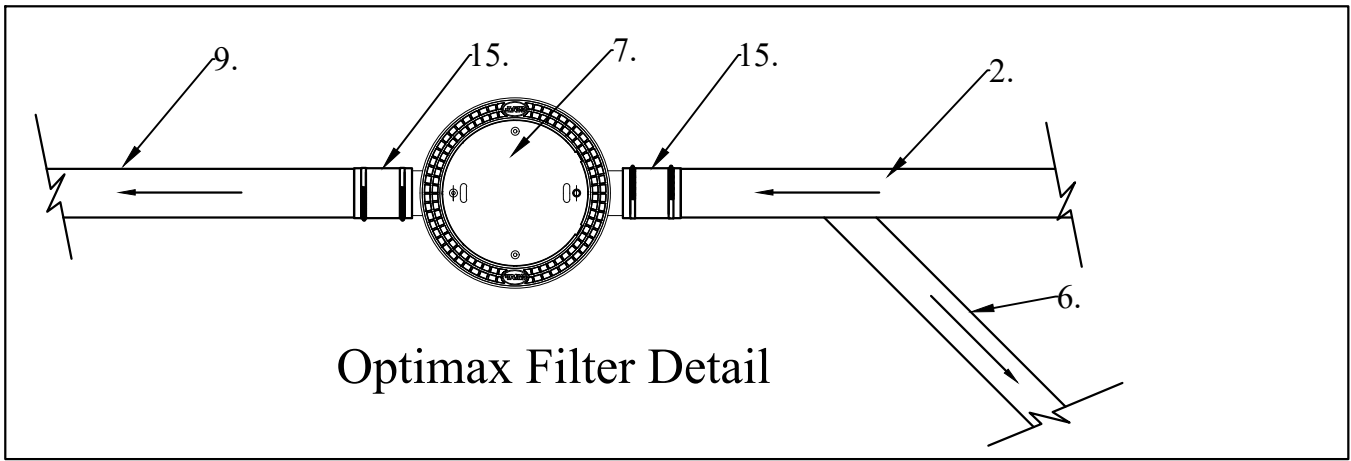
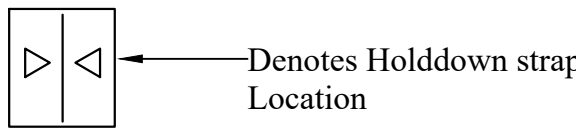


Tank Side View

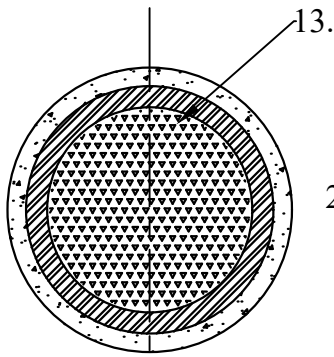
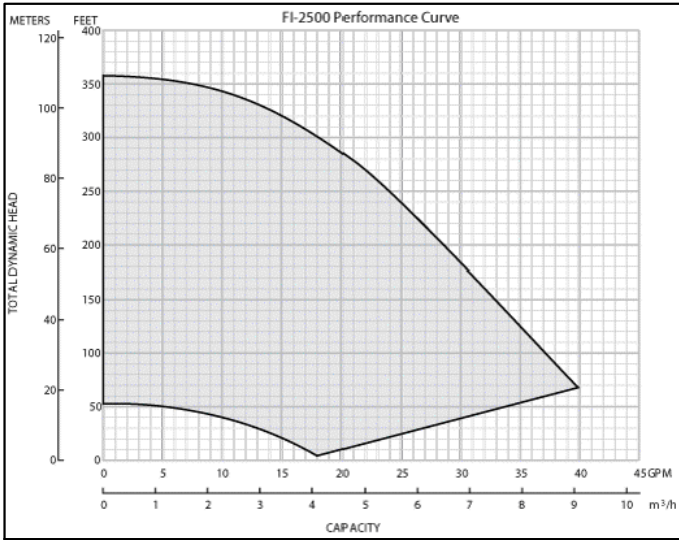


Optimax Filter Detail



Denotes Holddown strap Location

Legend	
1.	10' Diameter Single Wall Fiberglass Tank Capacity 25,000 Gallons
2.	Rain Water Input from Roof or other Source
3.	RainFlo FI-2500, Variable Speed Pump and PVC Housing
4.	2" Floating Pump Extractor with suction hose and 1.2mm Stainless Steel Screen Intake
5.	6" RainFlo Calming Inlet
6.	6" Clean Water Outlet from GRAF Filter to Inlet of Tank
7.	Graf Industrial Optimax Filter
8.	2" Half Coupling
9.	Debris Flushed out to Storm Drain with Overflow
10.	6" RainFlo Overflow Siphon
11.	30" PVC Access Riser and FRP Lid
12.	Access Ladder
13.	Cast Iron Lid and Ring (by others)
14.	Opticlean Spray Head
15.	Flexible Coupler For Pipe Connections (Typical)



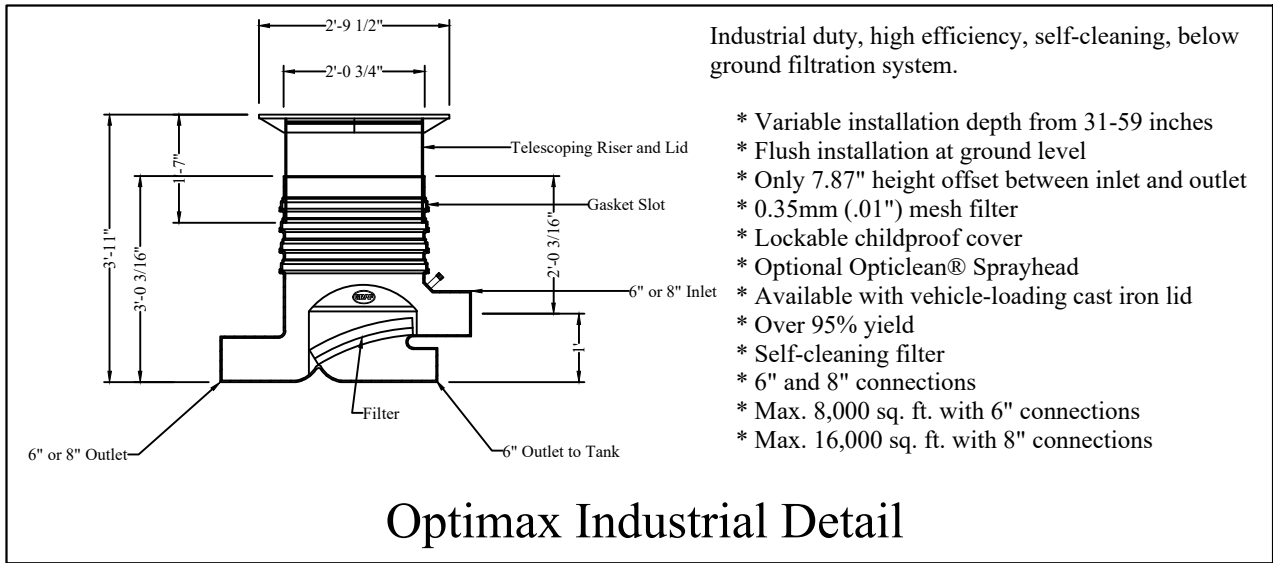
230v Power Supply

Variable Speed Pump Controller

Pressure Tank

Pressure Transducer

Line to Irrigation/ Usage/ Other



Optimax Industrial Detail

Industrial duty, high efficiency, self-cleaning, below ground filtration system.

- * Variable installation depth from 31-59 inches
- * Flush installation at ground level
- * Only 7.87" height offset between inlet and outlet
- * 0.35mm (.01") mesh filter
- * Lockable childproof cover
- * Optional Opticlean® Sprayhead
- * Available with vehicle-loading cast iron lid
- * Over 95% yield
- * Self-cleaning filter
- * 6" and 8" connections
- * Max. 8,000 sq. ft. with 6" connections
- * Max. 16,000 sq. ft. with 8" connections

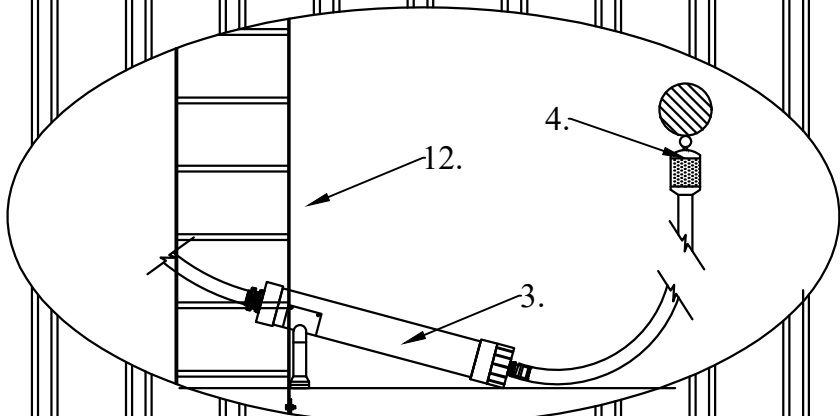
6" Overflow to Storm Drain

Backfill remainder with sand or approved equivalent

Geotech fabric between gravel and sand

Compacted Soil

Backfill 75% Minimum with approved gravel



10' Diameter Single Wall Tank
Capacity 25,000 Gallons

USER'S Responsibility
Rainwater supplied by RainHarvest Systems is NON-Potable water. Warning do not drink water supplied from RainHarvest Systems rainwater systems and related equipment. We will be happy to offer suggestions on the use of our various products either by way of printed material or through direct contact with RainHarvest Systems team members. However, since we have no control over the use of our products once they are shipped, NO WARRANTY WEATHER OF MERCHANTABILITY, FITNESS FOR PURPOSE, OR OTHERWISE is made beyond the repair, replacement, or refund of purchase price at the sole discretion of RainHarvest Systems. Users shall determine the suitability of the product for the intended application before using, and the users assume all risk and liability whatsoever in connection therewith, regardless of any team members suggestions or statements as to the application or construction. In no event of the purchase price of the product. Consult local building codes for the system use.

NOTE: This drawing is for illustrative purposes only. Actual systems and designs may vary. Always check with local building codes as they will apply. Electrical work to be performed by licensed professional. Points of use shall be labeled as: "Non Potable water, Do Not Drink!"