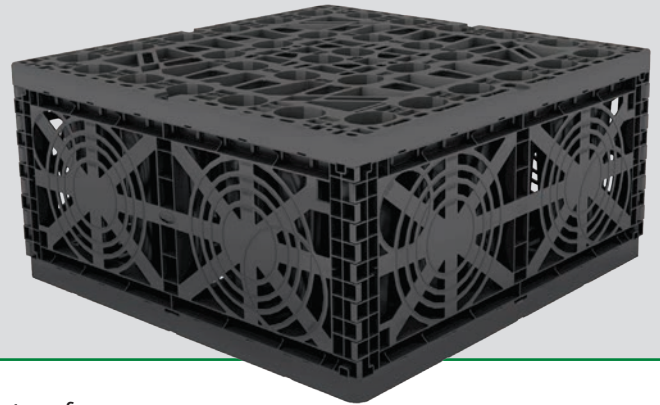


HIGH STORAGE VOLUME. EASY INSTALLATION. STORMWATER MANAGEMENT.



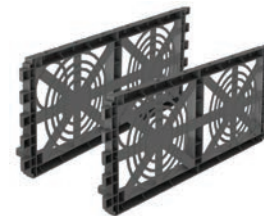
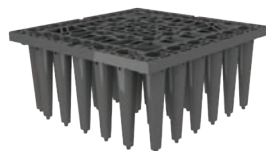
RainHarvest Systems offers the GRAF EcoBloc Maxx storage system for stormwater infiltration and retention solutions. This modular storage system has an HS-20 vehicle loading rating. Modules with baseplates can be stacked in multiple layers and can be connected together to form any configuration creating virtually unlimited storage capacity.

For stormwater infiltration applications, a permeable geotextile layer is wrapped around the EcoBloc modules allowing the stormwater to gradually drain back into the ground in a controlled manner. For water storage and reuse applications, an impermeable membrane is added between two layers of geotextile fabric. Made from 100% recycled material, the eco-friendly stackable modules save space, transport costs, and CO₂ emissions.

Features:

- High storage volume
- Service life of over 50 years
- Modular configurations
- Easy to install
- HS-20 vehicle loading
- Up to 96% reservoir volume
- Installation depth of up to 16'5"
- 5 year warranty

DIMENSIONS



	EcoBloc Maxx	EcoBloc Maxx Base Plate	EcoBloc Maxx End Plate
Volume	59.4 gallons	6.6 gallons	-
Length	2'7.5"	2'7.5"	2'7.5"
Width	2'7.5"	2'7.5"	3.1"
Height	13.8"	1.6"	1'4"
Weight	19.8 lbs.	8.8 lbs.	4.4 lbs.

Note: End plate accepts 4", 6", 8", or 10" connections

SPECIFICATIONS

EcoBloc Maxx		
Gross volume		59.4 gallons ¹
Net volume		57.3 gallons ¹
Storage coefficient		96%
Connections		4", 6", 8", 10", 12" ^{2,3} , 16" ^{2,3} , 20" ³
Load		
Load	Short-term	14.5 PSI
	Long-term	8.6 PSI
Without traffic load	min. earth covering	9.8"/1'7.7" ⁴
	max. earth covering	9'/6'6.7" ⁴
	max. installation depth	16'4.8"
Vehicle	max. number of layers	13
	min. earth covering	9.8"/1'7.7" ⁴
	max. earth covering	9'/6'6.7" ⁴
	max. installation depth	16'4.8"
HS-20	max. number of layers	13
	min. earth covering	2'7.5" ⁴
	max. earth covering	7'4.5"/4'11" ⁴
	max. installation depth	16'4.8"
max. number of layers	11	
Measurements		
Length		2'7.5"
Width		2'7.5"
Height		13.8"
Weight		19.8 lbs.

¹ With base plate, 66 gallons gross volume, 63.3 gallons net volume

² Optionally available with Vario shaft

³ Optionally available with adaptor plates

⁴ When combined with EcoBloc Inspect

Note: As EcoBloc Maxx is not inspectable, a layer of EcoBloc Inspect and Vario shafts are recommended for inspection purposes.

